

LANTANA PALMS, P.U.D.

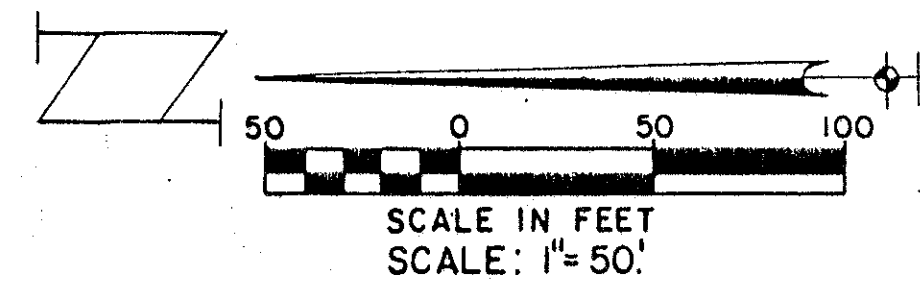
A REPLAT OF A PORTION OF TRACTS 14 AND 15, SOUTHWEST QUARTER,
PLAT OF SEC. 36 - T. 44 S. R. 42 E., PLAT BOOK 3, PAGE 10,
SECTION 36, TOWNSHIP 44 SOUTH, RANGE 42 EAST, PALM BEACH COUNTY, FLORIDA

SHEET 2 OF 2

MAY 1995

SURVEYOR'S NOTES:

- Bearing Base Reference: The South line of Section 36, Township 44 South, Range 42 East, Palm Beach County, Florida is assumed to bear S. 88 degrees 30'00" E., and is the basis of bearings shown hereon.
- Bearing Rotation Equation:
N. 88 degrees 30'00" W. (plat bearing) vs.
N. 88 degrees 31'05" W. (grid bearing) = bearing rotation of
00 degrees 01'05" counter clockwise (plat to grid)
- Coordinates shown are grid
Datum = NAD 83, 1990 Adjustment
Zone = Florida East
Linear unit = US Survey Foot/Meter
Coordinate system = 1983 State Plane Transverse Mercator Projection
- All distances are ground
Ground distance x scale factor = grid distance
Scale factor = 1.0000357
- Abbreviations: O.R.B. = Official Record Book
C = Centerline
P.B. = Plat Book
P.O.B. = Point of Beginning
P.R.M. = Permanent Reference Monument
Sec. = Section
TWP. = Township
Rge. = Range

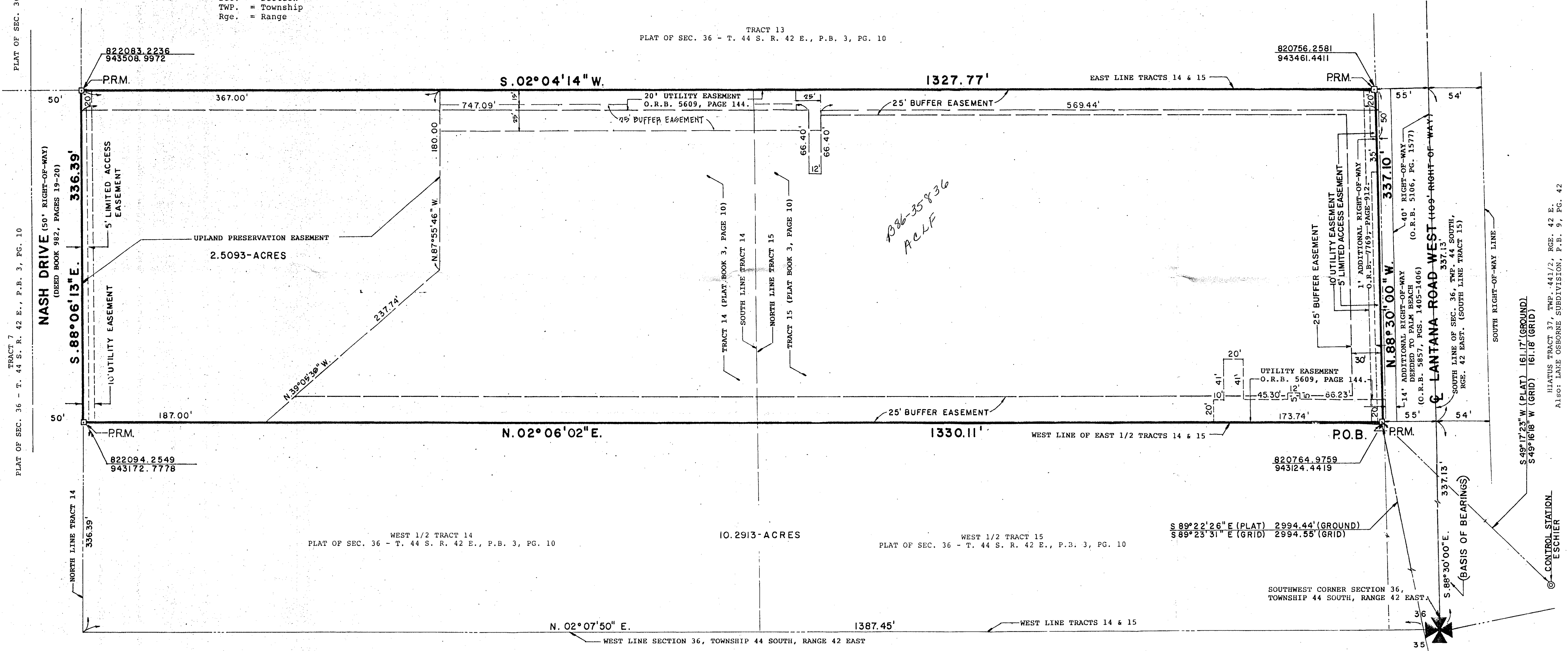


TRACT 13
PLAT OF SEC. 36 - T. 44 S. R. 42 E., P.B. 3, PG. 10

TRACT 5
PLAT OF SEC. 36 - T. 44 S. R. 42 E., P.B. 3, PG. 10

TRACT 7
PLAT OF SEC. 36 - T. 44 S. R. 42 E., P.B. 3, PG. 10

HIATUS TRACT 37, TWP. 44 1/2, RGE. 42 E.
Also: LAKE OSBORNE SUBDIVISION, P.B. 9, PG. 42



647-001

THERE MAY BE ADDITIONAL RESTRICTIONS THAT ARE NOT RECORDED ON THIS PLAT THAT MAY BE FOUND IN THE PUBLIC RECORDS OF THIS COUNTY.

Donald D. Daniels
PROFESSIONAL LAND SURVEYORS
 725 N. A1A • Suite C111 • Jupiter, FL 33477 • 407-747-9894

SUBDIVISION *Lantana Palms*
 BOOK 77 PAGE 92
 FLOOD ZONE B FLOOD MAP #1750
 QUAD #33 ZONING RS
 SE 88-39 ZIP CODE 33463
 PWD NAME *Lantana Palms*